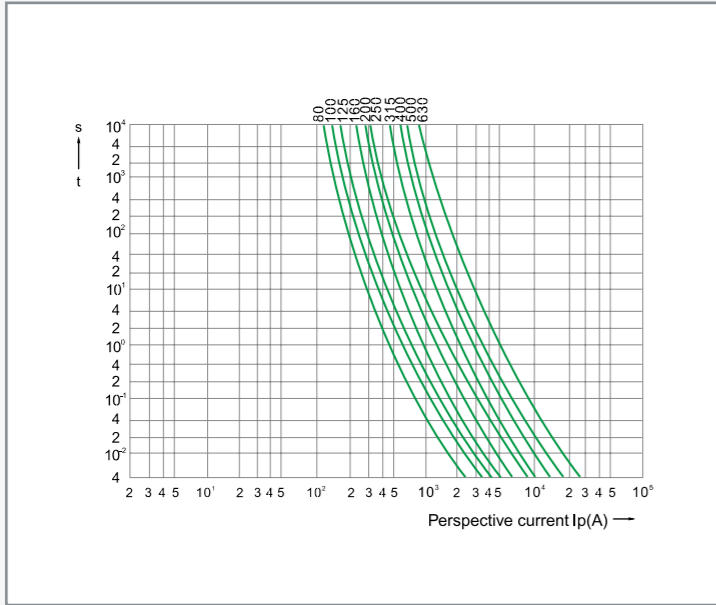
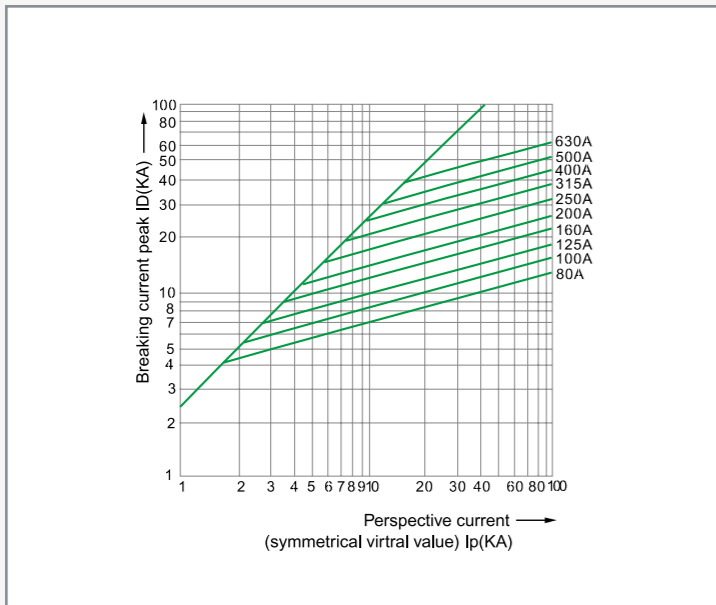


► **Characteristics Curve**



Time-current rang of "gG" fuse links RO201~203



Breaking current characteristics curve of "gG" fuse links RO201~203

Square Pipe Fuse Links With Knife Contacts



► **Applications**

Protection against overload and short-circuit in electric lines (type gG), also available for protection of semiconductor parts and equipments against short-circuit (type aR) and protection of motors (type aM).

Rated voltage up to 1140V; Rated current up to 1250A; Working frequency 50Hz AC; Rated breaking capacity up to 120KA. Compliant with GB13539 and IEC269.

► **Design Features**

Variable cross-section fuse element made from pure copper or silver sealed in cartridge made from high-duty ceramic. Fuse tube filled with chemically treated high-purity quartz sand as arc-extinguishing medium. Dot-welding of fuse element ends to the terminals ensures reliable electric connection and forms insert knife type contacts. Indicator or striker may be attached to the fuse link to show cutout of fuse or to give various signals and to cut the circuit automatically.

► **Basic Data**

The models, dimensions, ratings are shown in Figures 4.1~4.13 and Tables 4 .

Table 4

Cat. No.	Models		Rated voltage (V)	Rated current (A)	Dimensions/size (mm)		Weight (g)
	MIRO	Cross-reference			Sizes	Fig.	
0401	NH00C	-	500/690	10-100	000	See Figure 4.1	138

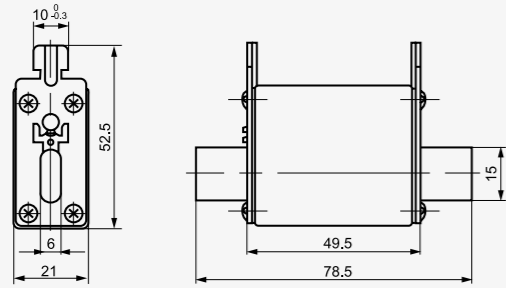


Figure 4.1

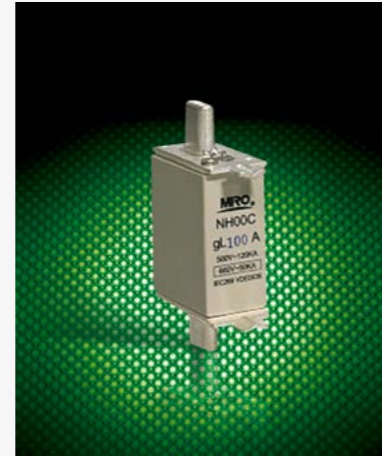


Table 4 (cont.)

Cat. No.	Models		Rated voltage (V)	Rated current (A)	Dimensions/size (mm)	Weight (g)
	MIRO	Cross-reference				
0402	NH00	RS31	500/690	10-160	00	4.2 78 50.5 15 30 60 201
0403	NH0	-	500/690	6-160	0	4.2 125 67 15 30 60 267

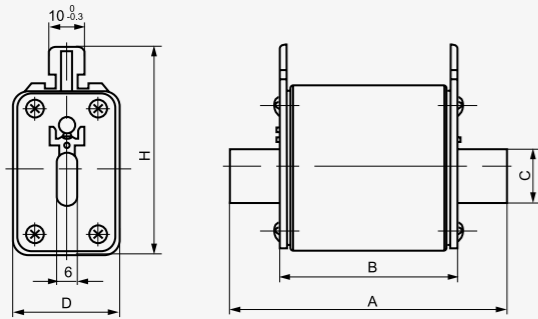


Figure 4.2



Table 4 (cont.)

Cat. No.	Models		Rated voltage (V)	Rated current (A)	Dimensions/size (mm)		Weight (g)
	MIRO	Cross-reference			Sizes	Fig.	
0404	NH1	RS32	500/690	32-250	1	4.3 135 68 20 46 58 447	
0405	NH2	RS33	500/690	80-400	2	4.3 150 68 30 58 68 727	
0406	NH3	RS34	500/690	160-630	3	4.3 150 68 36 70 82 975	

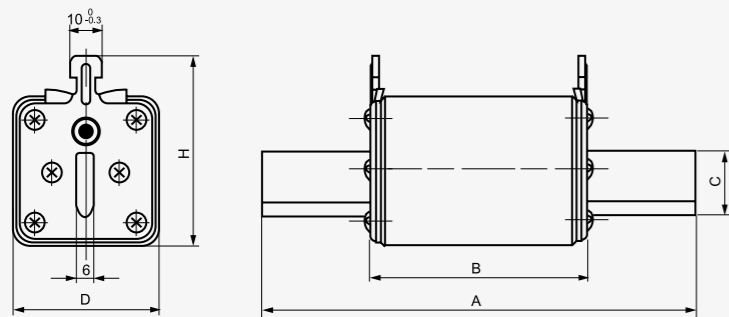


Figure 4.3



Table 4 (cont.)

Cat. No.	Models		Rated voltage (V)	Rated current (A)	Dimensions/size (mm)		Weight (g)
	MIRO	Cross-reference			Sizes	Fig.	
0407	NH1	-	500/690	16-160	1	See Figure 4.4	312

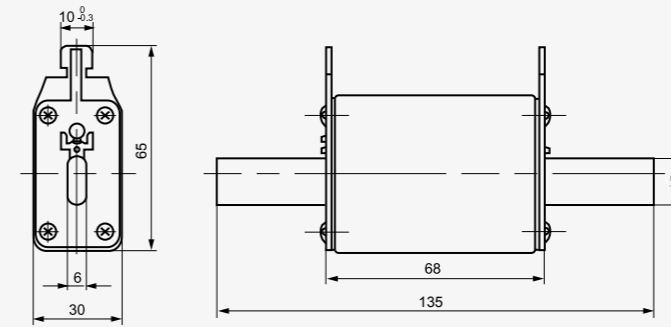


Figure 4.4



Table 4 (cont.)

Cat. No.	Models		Rated voltage (V)	Rated current (A)	Dimensions/size (mm)		Weight (g)
	MIRO	Cross-reference			Sizes	Fig.	
0408	NH2	-	500/690	35-250	2	4.5 150 67 20 46 67 458	
0409	NH3	-	500/690	200-400	3	4.5 150 67 30 58 81 727	

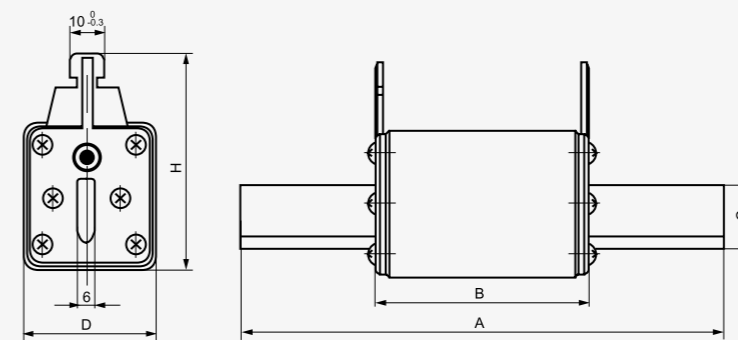


Figure 4.5





Table 4 (cont.)

Cat. No.	Models		Cross-reference		Rated voltage (V)	Rated current (A)	Dimensions/size (mm)					Weight (g)		
	MIRO		gG(Normal)	aR(Fast)			Sizes Fig.	A	B	C	D		H	
0410	RO30A	RS30A	NT00C	-	500/690	4~100	000	4.6	78	49	15	21	48	123
0411	RO30B	RS30B	NT00C	-	500/690	4~100	000	4.6	78	49	15	21	48	117
0412	RO30C	RS30C	3NA3	3NE18..	500/690	10~100	000	4.6	78	49	15	21	52.5	132
0413	RO31A	RS31A	PH00	-	500/690	10~160	00	4.6	78	49	15	30	53	178.5
0414	RO31B	RS31B	NT0	3NE41..	500/1140	6~160	0	4.6	125	68	15	29	61.5	278
0415	RO31C	RS31C	NT1	-	500/690	32~200	1	4.6	135	68	20	29	61.5	293.5

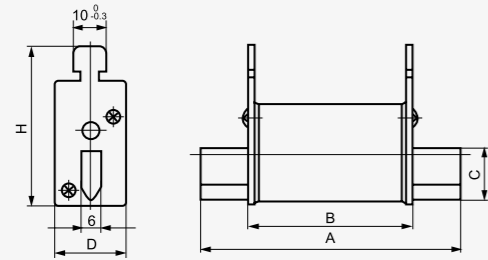


Figure 4.6



Table 4 (cont.)

Cat. No.	Models		Cross-reference		Rated voltage (V)	Rated current (A)	Dimensions/size (mm)					Weight (g)		
	MIRO		gG(Normal)	aR(Fast)			Sizes Fig.	A	B	C	D		H	
0416	NT00		RT16-00	NGTC00	500/690	6~160	00	4.7	78	49	15	29	56	175
0417	NT0		RT16-0	-	500/690	6~160	0	4.7	125	68	15	29	56	252

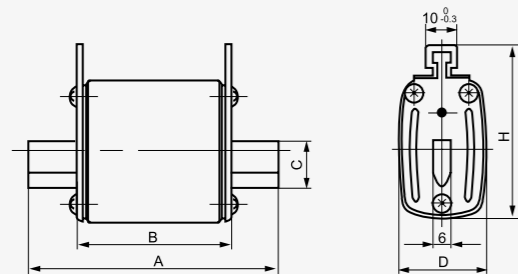


Figure 4.7



Table 4 (cont.)

Cat. No.	Models		Cross-reference		Rated voltage (V)	Rated current (A)	Dimensions/size (mm)					Weight (g)		
	MIRO		gG(Normal)	aR(Fast)			Sizes Fig.	A	B	C	D		H	
0418	RO32	RS32	NT1 RT16-1 3NA1 RT20-1	3NE12.. NGTC1	500/690	32~250	1	4.8	135	68	20	48	60	455
0419	RO32A	RS32A	-	-	1140	200	1	4.8	172	110	19.5	44	58	570
0420	RO32B	RS32B	NT1 RT16-1	-	500	250	2	4.8	135	68	20	40	68	393
0421	RO33	RS33	NT2 RT16-2 3NA1 RT20-2	3NE13.. NGTC2	500/690	80~400	2	4.8	150	68	25	58	70	650
0422	RO33B	RS33B	RT16-2	-	500	400	2	4.8	150	68	25	52	71	580
0423	RO34	RS34	NT3 RT16-3 NH3 RT20-3	3NE14.. NGTC3	500/690	160~630	3	4.8	150	68	32	68	80	880
0424	RO35	RS35	-	-	500	6~160		4.8	135	68	20	30	53	249
0425	RO36	RS36	EAP0	-	500	32~200	1	4.8	135	68	20	40	59	356
0426	RO39A	RS39A	NT4a	-	380/500	500~1250	4a	4.8	200	90	50	97	113	2140

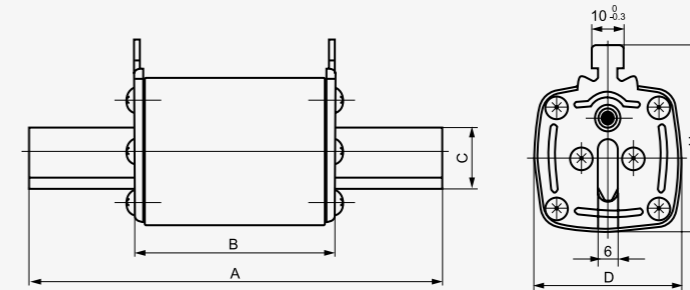


Figure 4.8



Table 4 (cont.)

Cat. No.	Models		Cross-reference		Rated voltage (V)	Rated current (A)	Dimensions/size (mm)								Weight (g)		
	MIRO		gG(Normal)	aR(Fast)			Sizes Fig.	A	B	C	D	G	E	F		H	
0427	RO34K	RS34K	-	3NC8	500/690	150~630	4.9	140	68	32	68	6	108	10.5	85	810	
0428	RO38	RS38	-	3NE3626	500/1000	200~630	4.9	160	86	32	70	6	126	11	82	1050	
0429	RO39	RS39	NT4 RT17	-	500	500~1250	4	4.9	200	90	50	97	8	150	16.5	113	2470
0430	RO39B	RS39B	NT4B RT17	-	500	500~1000	4	4.9	200	79	50	88	8	150	17	115	2100

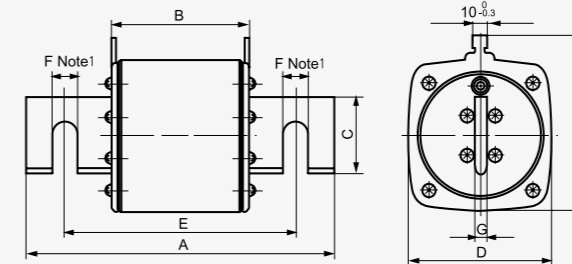


Figure 4.9

Note: The joint holes of two-horizontal type is allowed to be changed to one horizontal one straight type or two straight type.

